

ISTRUZIONI DI MONTAGGIO E MANUTENZIONE

BOCCA MURO A CASCATA

9926L2

ISTRUZIONI DI MONTAGGIO E MANUTENZIONE
BOCCA MURO A CASCATA.

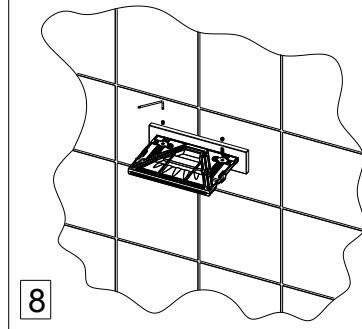
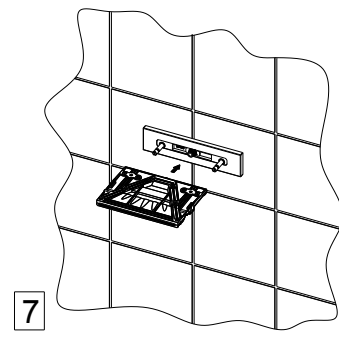
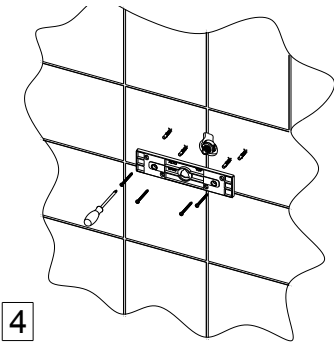
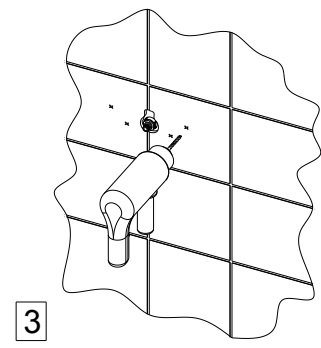
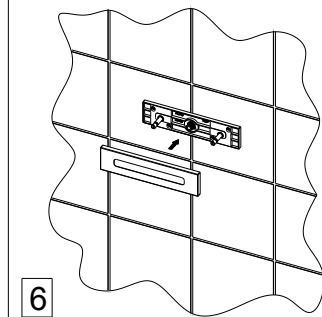
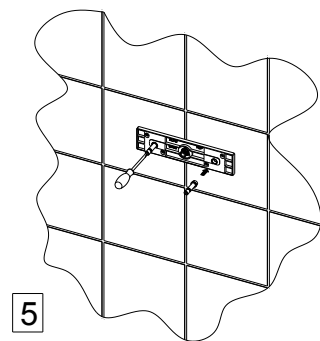
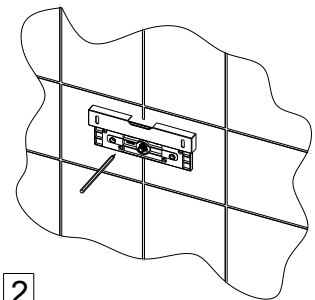
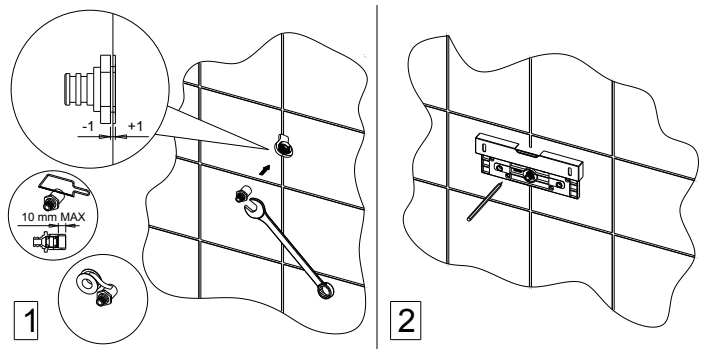
ASSEMBLY AND MAINTENANCE INSTRUCTIONS
WALL MOUNTED SPOUT.

INSTRUCTIONS D'INSTALLATION ET D'ENTRETIEN
BEC MURAL.

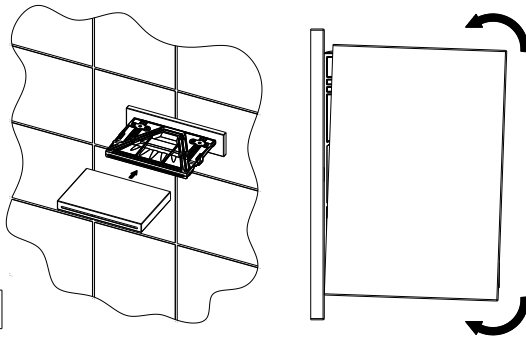
MONTAGE UND WARTUNGSANLEITUNG
MESSING WAND WANNENEINLAUF.

INSTRUCCIONES DE MONTAJE Y MANTENIMIENTO
CASCADA DE LA PARED DE LA BOCA.

PALAZZANI



9



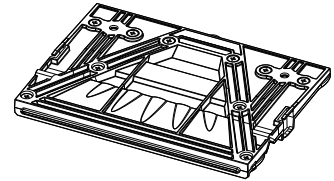
N°2 VITI DI FISSAGGIO
SCREWS
VIS DE SERRAGE
TORNILLOS
SCHRAUBEN

N°1 PERNO
PIN
PIVOT
.....
.....

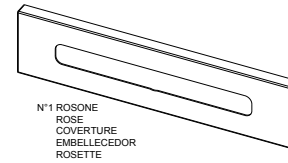
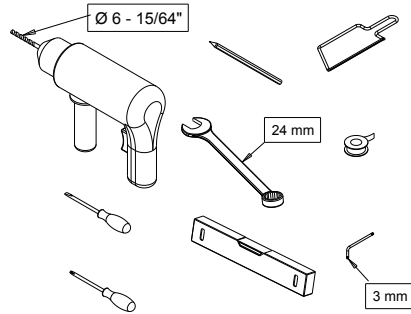
N°1 BASE DI FISSAGGIO
MOUNTING BASE
BASE DE FIXATION
BASES DE FIJACION
MONTAGE BASIS

N°4 VITI CON TASSELLI
SCREWS WITH WALLPLUGS
VIS AVEC TASSEAUX
TORNILLOS CON PASADORES
SCHRAUBEN MIT DÜBELN

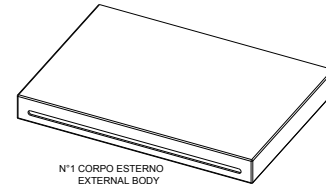
N°2 SUPPORTO
SUPPORT
SUPPORT
SOPORTE



N°1 CARTUCCIA
CARTRIDGE
CARTOUCHE
CARTUCHO
REGENBRAUSE



N°1 ROSONE
ROSE
COUVERTURE
EMBELLECEDOR
ROSETTE



N°1 CORPO ESTERNO
EXTERNAL BODY
CORPS EXTERNE
CUERPO EXTERIOR
EXTERNEKÖRPER

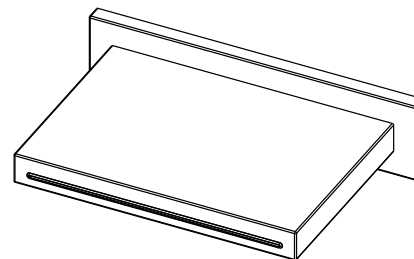
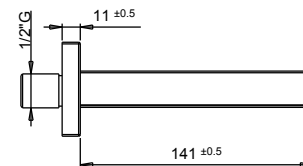
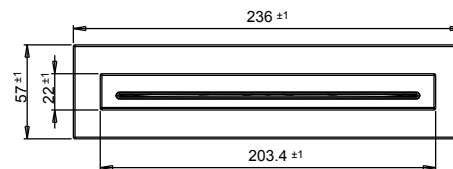
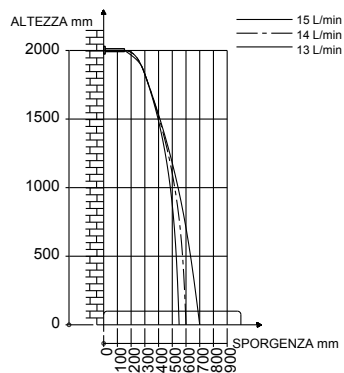
AVVERTENZE:
Prima di installare il soffione è necessario spurgare in modo accurato le tubazioni di alimentazione

WARNING:
The supplying pipes must be carefully cleaned before installing the showerhead.

AVVERTENZE:
Avant de la mise en place du plafond de douche, il faut purger toutes les conduites d'alimentation.

NOTE:
Die Verbindungsröhre sorgfältig putzen bevor die Installation der Kopfsbrause.

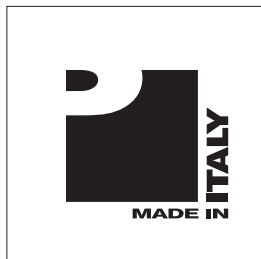
ADVERTENCIAS:
Antes de conectar rociador es necesario purgar correctamente la instalación hidráulica de alimentación de cualquier impureza que pueda tener.





NOTE

NOTE



www.palazzani.eu